

HOTEL SOKA

TANGO / Accommodation and others



Time Spent by the Lakeside of Tango, Inspired by Hygge of Northern Europe

Soka is a Hygge-themed hotel in Tango, set on the banks of a beautiful lake (Hygge: Danish for “cozy space” or “good times”). Visitors can spend their time listening to the sound of nature, enjoying the specialties of the Tango and Tajima regions, taking a relaxing break in the hot spring and adjusting the five senses as you relax while watching the flickering flames in the fire lounge. Customer service is provided by a team that shares the same philosophy and flexibly offers a comfortable time and space.

Address	915-15 Kobama, Amino-cho, Kyotango City, Kyoto 629-3113
Access	A 10-min. drive from JR "Amino Station"
Parking	Up to 30 vehicles
Tel	0772-72-1009
Email	
Website	https://soka-kyoto.jp
Twitter	
Facebook	
Instagram	https://www.instagram.com/soka.kyoto/



DESIGN WEEK KYOTO

ARIA FACTORY HOME / ARIASSOCIATES

TANGO / Furniture



"Creating new items through meeting new people"

ARIA Associates is a company that creates custom-made furniture to fit your space. They have stores in Kitashirakawa in Kyoto City and Fukuchiyama, and places the utmost importance on communicating with people directly. The representative, Mr. Ariyoshi, is not a craftsman himself. However, he never allows any compromise; he always reminds himself of their philosophy, "Make people happy with products and heart," and put all his efforts into manufacturing together with his craftsmen. He is also keen to train furniture craftspeople, and is actively accepting the younger generation and students from overseas.

Address	1348 Migouchi, Yosano-cho, Yosa-gun, Kyoto 629-2313
Access	Nearby the Tango Kairiku Kotsu Bus "Migouchi-guchi" Stop
Parking	Up to 5 vehicles
Tel	0772-43-0247
Email	info@aria-kyoto.jp
Website	https://aria-kyoto.jp
Twitter	https://twitter.com/ARIA80424235
Facebook	https://www.facebook.com/AriaYouXianHuiSheariasoshieitsu/
Instagram	https://www.instagram.com/aria_kyoto/



DESIGN WEEK KYOTO

Creative Workshop ITOASOBI

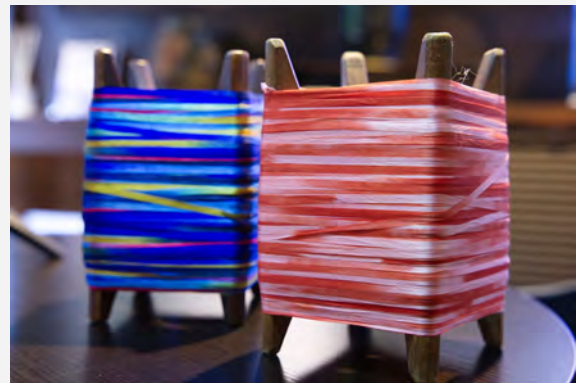
TANGO / Manufacturing of textiles



Artist who is "capable of anything," creating fabric never seen before

Toru Yamamoto loves fashion and has experience of wholesaling fabrics. His most notable strength is his sympathy for designers' feelings who seek fabric that never existed before in the world. He's committed to weaving with machines and has expanded his versatility of technique and knowledge by wanting to create new fabric himself. As a result, people come to him incessantly, asking "Can you make this?" He can also cater to needs of interior design and foreign brands by choosing the best machine and speed for each yarn. He keeps creating "fabric never-seen-before."

Address	1222 Ikuji, Yosano-cho, Yosa-gun 629-2311
Access	Take a taxi from Kyoto Tango Railway "Yosano" Sta. (10 min.), or take the Tango Kairiku Kotsu Bus "Ikuji" Stop
Parking	Up to 4 vehicles
Tel	0772-42-3515
Email	itoasobi@nifty.com
Website	http://www.itoasobi.jp
Twitter	
Facebook	https://www.facebook.com/itoasobi1936
Instagram	https://www.instagram.com/itoasobi1936/



DESIGN WEEK KYOTO

KYOTO PREFECTURAL INSTITUTE for NORTHERN INDUSTRY

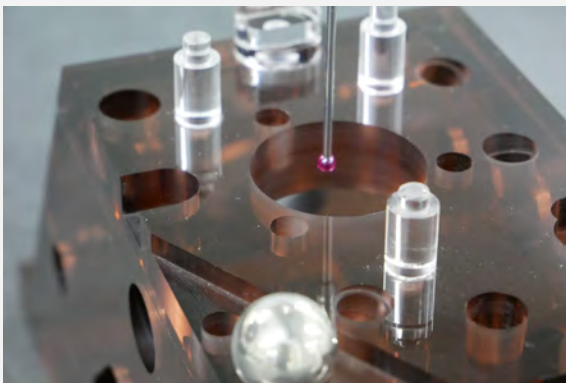
TANGO / Technical support for the manufacturing industry in the Tango region



Brain behind Tango's Monozukuri industry

So-called "Orikin Center" is where DWK participants should visit first. This public institute will guide you through the Tango's Monozukuri (manufacturing) such as weaving represented by Tango Chirimen, machinery, and metal. They have a history of over 100 years, carrying out research, technical support, human resources development, etc. as a public testing and research center of Kyoto prefecture. "Brain of Tango's Monozukuri," with their facilities and professional researchers, are worthy to be called "Brain of Tango."

Address	225 Arayama, Mineyama-cho, Kyotango 627-0004
Access	A 15-min. walk from Kyoto Tango Railway "Mineyama" Sta.
Parking	Up to 20 vehicles
Tel	0772-62-7400
Email	oriki-kikakurenkei@pref.kyoto.lg.jp
Website	https://www.pref.kyoto.jp/oriki/
Twitter	
Facebook	https://www.facebook.com/orikincenter/
Instagram	



DESIGN WEEK KYOTO

SHIONO FOUNDRY

TANGO / Pig iron castings



A sense of unity among "Shionorians" is the driving force for growth

Shiono Foundry is a casting company that produces industrial parts that support Japan's manufacturing. Visitors can watch and feel the heat of melting metal right in front of their eyes, which will be far more impressive than they can imagine. Mr. Shiono, the president of the company, calls his employees "Shionorian" with respect and pride. He is the Shionorian himself who leads the company and takes the utmost importance on the relationships with people, from employees to business partners and all others involved in his business. They have exciting plans to open a café and to open their factory regularly.

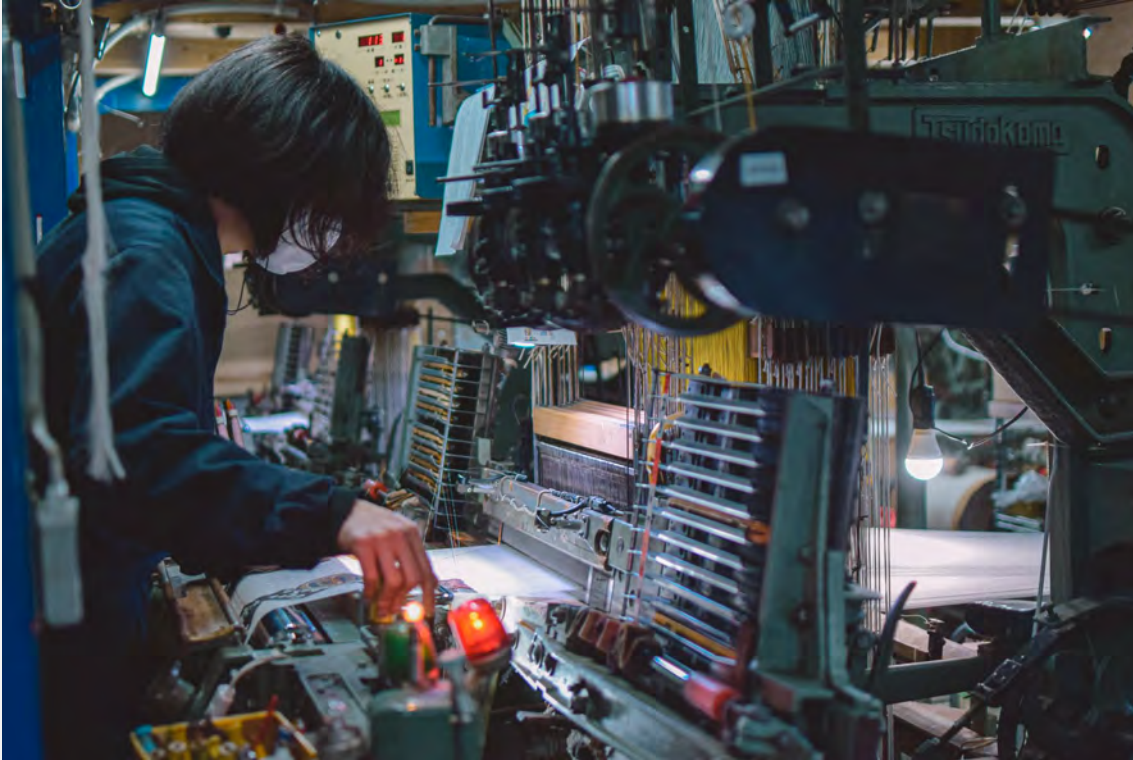
Address	1917-1 Kanaya, Yosano-cho, Yosa-gun 629-2421
Access	400 meters from Tango Kairiku Kotsu Bus “Yasai-no Eki” Stop
Parking	Up to 3 vehicles
Tel	0772-42-6288
Email	info@shiono-cast.com
Website	https://shiono-cast.com
Twitter	https://twitter.com/ShionoCast?ref_src=twsrc%5Egoogle%7Ctwcamp%5Eserp%7Ctwgr%5Eauthor
Facebook	
Instagram	https://www.instagram.com/shionocast/



DESIGN WEEK KYOTO

SHIBATA TEXTILE

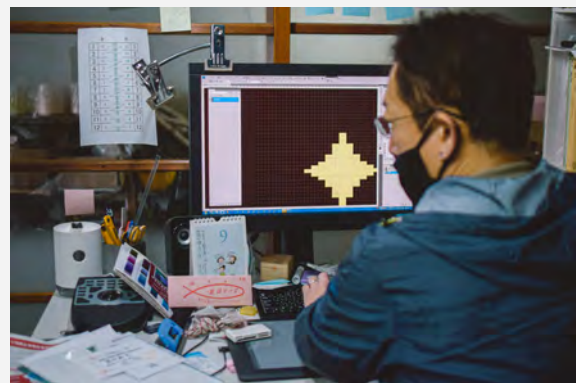
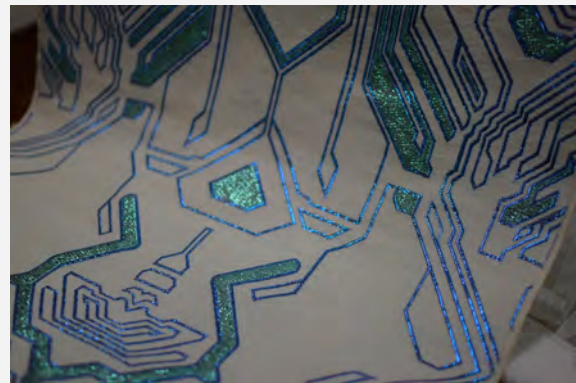
TANGO / Silk textiles



"Seeking business potential of "super luxurious" custom-made kimono"

Shibata Orimono is known for its "Nuitori (embroidery) Chirimen" technique which can create embroidery-like 3D finish in the course of weaving. They can handle all processes of producing kimono, from making data of patterns to actual weaving. With their techniques, your original kimono can be made into fabric the way you want. Custom-made kimono can be ordered from 1 piece and there is a growing expectation from various industries such as wedding and movie industries. Shibata is working hard to grow the potential of "super luxurious" custom-made kimono business.

Address	869-2 Migouchi, Yosano-cho, Yosa-gun 629-2313
Access	A 10-min. drive from Kyoto Tango Railway “Nodagawa” Sta. or a 3-min. walk from Tango Kairiku Kotsu Bus “Migouchi-guchi” Stop
Parking	Up to 3 vehicles
Tel	0772-42-2843
Email	nuitori@gmail.com
Website	http://www.shibata-orimono.com
Twitter	
Facebook	
Instagram	



DESIGN WEEK KYOTO

TATETSUNAGI

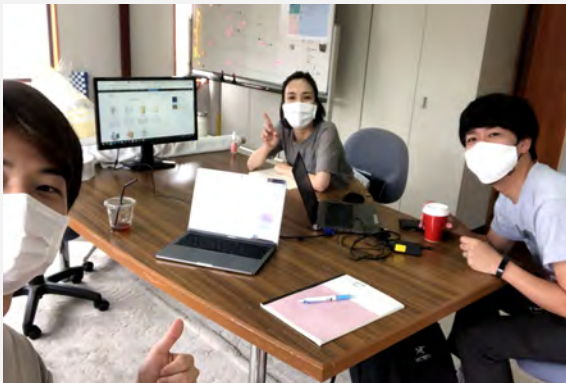
TANGO / Polyester Chirimen products



Weave Thoughts for Someone Special Through Traditional Textile

Tatetsunagi is a unit of three people who are involved in Tango Chirimen fabric production and share the same wish to produce items which connect kindness, region and tradition, just like textiles creating various expressions by the crossing of warp and weft. Their unique designs are produced as designs and then printed by inkjet on polyester Chirimen. Some of their product examples are Tango Chirimen tote bags collaborated with the local supermarket “Nishigaki”, pouches printed with Hirabayashi Dairy “Hiraya Milk” packaging, and custom-made orders.

Address	Weaving Factory: 503 Shimoyamada, Yosano-cho, Yosa-gun, Kyoto 629-2302
	Printing Factory: 48 Kuchiono, Omiya-cho, Kyotango City, Kyoto 629-2501
Access	Weaving Factory: A 7-min. walk from Tantetsu “Yosano” Station Printing Factory: A 7-min. walk from Tantetsu “Kyotango Omiya” Station
Parking	Up to 3 vehicles
Tel	0772-42-4105
Email	info@tatetsunagi.com
Website	https://tatetsunagi.com
Twitter	
Facebook	
Instagram	https://www.instagram.com/tatetsunagi/



TAYUH TEXTILE INDUSTRY

TANGO / Silk textile



Where people come and ask, “Can you make fabric like this?”

One of the biggest weaving factories in Tango, Tayuh Textile Industry has won numerous awards. People keep coming to them and give their request of fabrics they wish to have which attests Tayuh’s trusted professionalism both in their personality and techniques. With about 60 weaving machines of different variety, they produce textiles not only for kimono but also for Western style clothing and interior decoration. Their beautiful garden, “Hosenju,” designed by a leading garden designer of Showa period (1926-1989) Mirei Shigemori, is worth visiting, too.

Address	112 Asamogawa, Amino-cho, Kyotango 629-3104
Access	A 30-min. walk from “Amino” Sta., or a 3-min. walk from Tango Kairiku Kotsu Bus “Asamogawa Kumin Kaikan-mae” Stop
Parking	Up to 20 vehicles
Tel	0772-72-0307
Email	info@tayuh.jp
Website	http://www.tayuh.jp
Twitter	
Facebook	https://www.facebook.com/chirimen.tayuh/
Instagram	



DESIGN WEEK KYOTO

TANRYO

TANGO / Textiles



"Expanding the possibilities for "Poly-Chiri," feeling the sea breeze"

"What Tanryo is proud of is the spectacular scenic view of the beautiful ocean and the gentle, refreshing sea breeze. Of course, their products of polyester Chirimen, so called "Poly-Chiri," are also delivered with pride. It takes numerous processes to make polyester to be silk-like textile, however, skilled and knowledgeable artisans can create any desired texture as if there are no difficulties. They are eager to collaborate and their expectations grow, anticipating new encounters for exciting future products."

Address	1788 Aza Iwataki, Yosano-cho, Yosa-gun 629-2262
Access	A 23-min. walk from Kyoto Tango Railway "Iwatakiguchi" Sta., or a 2-min. walk from Tango Kairiku Kotsu Bus "Iwataki" Stop
Parking	Up to 10 vehicles
Tel	0772-46-3365
Email	tanryo@ute.ocn.ne.jp
Website	https://tanryo.com
Twitter	https://twitter.com/ikousuke
Facebook	https://www.facebook.com/tanryokyoto/
Instagram	https://www.instagram.com/trip1_tango/



DESIGN WEEK KYOTO

TATAMIYA TATSUZO Sugimoto Tatami Store

TANGO / Tatami products



Explore Tatami for “Feel Good” with a Flexible and Kind Heart

Tatamiya Tatsuzo is dedicated to tatami made mainly from domestic rush, even though the amount of domestically produced tatami mats in Japan has decreased to approximately 10% of the total production. The company selects tatami mats based on its own quality judgments and offers a varied range of products to ensure that you find just the right ones to suit your life. In this area, the beautiful landscape and climate of Amanohashidate still remains, thus by digging deeply into the history and culture spun by the people, they explore in depth the potential of natural domestic materials and the tatami mats made from them, and connect them to the future.

Address	1755 Sumiyoshi, Miyazu City, Kyoto 626-0013
Access	A 14-min. walk from Kyoto Tango Railway “Miyazu” Station or a 2-min. walk from Tango Kairiku Kotsu Bus “Sanno-bashi” Stop
Parking	Up to 2 vehicles
Tel	0772-22-2924
Email	sugimoto.tatamiten@gmail.com
Website	tatsunootoshigo.com
Twitter	https://twitter.com/tatsuzou4g
Facebook	
Instagram	



DESIGN WEEK KYOTO

NIPPON GENSHOSHA

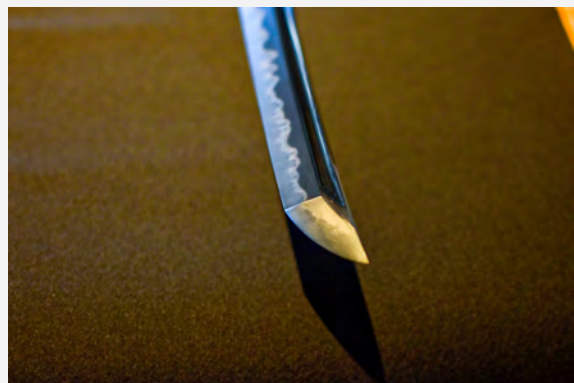
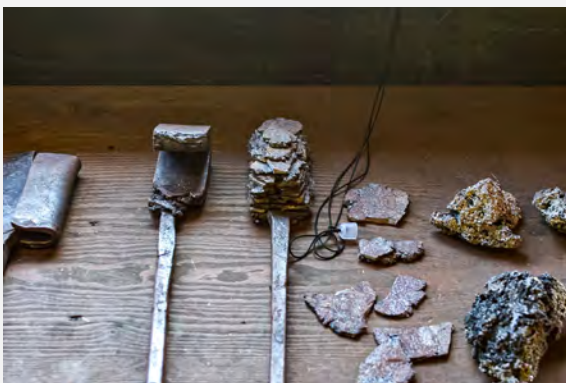
TANGO / Japanese swords, Japanese sword making experience



Aspiring to "Produce Japanese Swords that Reflect the Present" from the Tango Region

Three people who trained together under a master swordsmith in Tokyo opened a company producing and selling Japanese swords in Tango. In olden times, Japanese swords were regarded as people's spiritual amulets and status symbols. Respecting the traditional techniques and culture of Japanese swords, they also share ideas that are not limited to the existing values of people living today. People from around Japan and abroad visit their workshop and feel and interact with the Japanese sword culture. Experience the beauty of Japanese swords at Nippon Genshosh.

Address	314 Miyake, Tango-cho, Kyotango City, Kyoto 627-0212
Access	A 2-min. walk from Tankai bus “Miyake Station” Stop
Parking	Up to 5 vehicles
Tel	0772-66-3606
Email	info@gensho.jpn.com
Website	https://gensho.jpn.com/
Twitter	https://twitter.com/genshousya?t=c98JEv4v5CM18OJL6kf7Yw&s=09
Facebook	https://www.facebook.com/nippongenshosya/
Instagram	https://www.instagram.com/nippongenshosa/



DESIGN WEEK KYOTO

NOGIGEN

TANGO / Agricultural products, agricultural experience



Deliver Crops Bringing a Smile to People

Nogigen is a family-run farm that grows rice, broccoli, melons, Horikawa burdocks and other vegetables under the motto “Be healthy from the core of your body.” In addition to agricultural products, they produce and sell processed items such as Setsubun Mochi (rice cake) and miso. You can energize yourself with the vegetables and rice grown by the members of Nogigen who are always full of smiles and happiness amid the rich natural environment of Tango. They aim to bring their smiles to people through food and food experiences by interacting with nature.

Address	1011 Oyama, Tango-cho, Kyotango City, Kyoto 627-0211
Access	1-min. walk from Tango Kairiku Kotsu bus “Oyama” Stop
Parking	Up to 6 vehicles
Tel	0772-75-1939
Email	oishii.agri.factory@gmail.com
Website	https://nogigen.raku-uru.jp/
Twitter	
Facebook	
Instagram	



DESIGN WEEK KYOTO

PARANOMAD

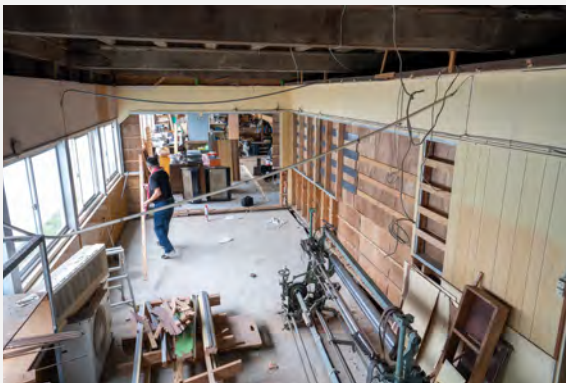
TANGO / Textile



Unique Textile From Tango, Japan

PARANOMAD creates textiles on the theme of “the only one special piece in the world.” The textiles with a unique sensibility created by Ms. Harada, who also has a career in sculpture, bring new life into Tango textiles. Finally, she has opened her own multi-functional base which includes a factory and showroom in Yosano. Feel the space filled with Ms. Harada's love for Tango and textiles.

Address	185-1 Kaya, Yosano-cho, Yosa-gun, Kyoto 629-2403
Access	1-min. walk from Tango Kairiku Kotsu bus “Kayachosha” Stop
Parking	Up to 5 vehicles
Tel	090-7767-0829
Email	textile@paranomad.net
Website	https://paranomad.net/
Twitter	
Facebook	https://www.facebook.com/PARANOMAD
Instagram	https://www.instagram.com/paranomad/



DESIGN WEEK KYOTO

BIO RABBITS

TANGO / Organic vegetables & cafe



Learn what is important for our life through food

Listening to Osamu Umemoto and people working at the farm while touching soil. It's not just about "how great their veggies taste" or "their special farming process." Their story starts from how much they care about the soil. Organic farming does not overly get rid of weeds. Vegetables that grow even among weeds keep bugs away and taste great and strong. They grow vegetables like they raise children. They dream of the day when kids can eat organic veggies for school lunch. You can also get their fresh veggies at "Tentomushi Batake Café (Ladybug Field Café)" next to the farm.

Address	441 Kurobe, Yasaka-cho, Kyotango 627-0142
Access	From Kyoto Tango Railway “Mineyama” Sta., take the Tango Kairiku Kotsu Bus and get off at “Yasaka Bunko-mae” Stop, then a 5-minute walk
Parking	Up to 6 vehicles
Tel	0772-60-8673
Email	info@tentoumushi-batake.com
Website	https://tentoumushi-batake.com
Twitter	https://twitter.com/101064_batake
Facebook	https://www.facebook.com/umechanfarm
Instagram	https://www.instagram.com/tentoumushi_batake/



DESIGN WEEK KYOTO

HIROSE INDUSTRY

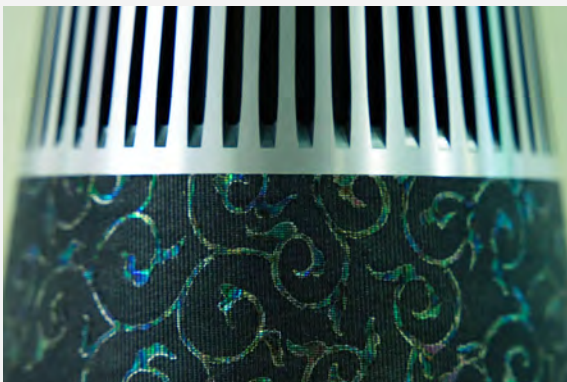
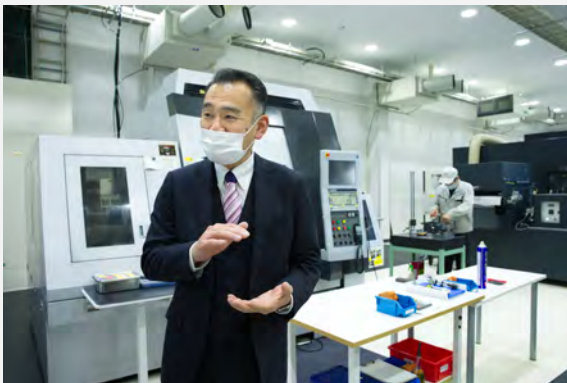
TANGO / Processing of metal precision parts



State-of-the-art facility, cutting technique, and connection between people

A linear drive 5-axis processing machine shows an especially special presence even in Hirose Industry's factory which has a neo-futuristic feel. 5-axis processing integrated processing of every side except the attaching part is realized. High accuracy is maintained and controlled thorough their processing methods and air conditioning management. Masataka Hirose is passionate about training young employees under the philosophy, "Machines work automatically, but we, people, control them." Enjoy their factory where you can feel the state-of-the-art technique of "professionals who have mastered cutting" and their commitment to "people."

Address	743 Zennoji, Omiya-cho, Kyotango 629-2504
Access	A 5-min. walk from Tango Kairiku Kotsu Bus “Zennoji Kominkan-mae” Stop, or a 30-min. walk from Kyoto Tango Railway Omiya Sta.
Parking	Up to 10 vehicles
Tel	0772-64-3594
Email	hirose-industry@hirose-kogyo.co.jp
Website	https://hirose-kogyo.com/
Twitter	
Facebook	
Instagram	https://www.instagram.com/hiroseindustry/



DESIGN WEEK KYOTO

FILTANGO

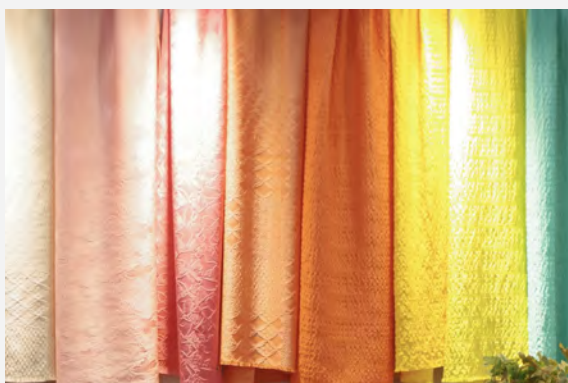
TANGO / Tango Chirimen lifestyle items



Comfortable Daily Life with Tango Chirimen Silk with a 300-year History

Filtango is an endeavor started by Ms. Yamane who is also a knit designer pursuing her wish to bring out the new appeal of Tango Chirimen and use it for familiar products and thus connect it to the future. During the event period, workshops will be held in the DWK's information center with the female artisans who support the production of filtango's products, where visitors can enjoy time spent knitting Tango Chirimen. Enjoy the new appeal of Tango Chirimen with the artisans.

Address	843 Sugitani, Mineyama-cho, Kyotango City, Kyoto 627-0012
Access	A 5-min. walk from JR "Mineyama" Station or a 3-min. walk from Tango Kairiku Kotsu Bus "Mineyama Annaisho" Stop
Parking	Available
Tel	090-4026-7442
Email	info@filtango.com
Website	https://www.filtango.com/
Twitter	
Facebook	
Instagram	https://www.instagram.com/filtango_kyoto/?hl=ja



DESIGN WEEK KYOTO

MIZOKAWA FURNITURE STORE

TANGO / Furniture and wood works



Learning Anew from the Past – Legacy Passed to the Future Generation

Softwood or hardwood, board grain or vertical grain, front or back of the wood... The pride of the real craftsman is to identify the “best” of the wood and to make the most of its characteristics in the right place with the right material. Mizokawa’s manufacturing process never permits even the smallest of compromises. The longer you use their furniture, the more your attachment and appreciation grows. They continue to evolve in order to be the “people” and “company” that the world needs, in preparation for the arrival of an era in which values are focused on emotional richness instead of an industrialized society merely pursuing efficiency and productivity.

Address	104 Kuchiono , Omiya-cho, Kyotango City, Kyoto 629-2501
Access	A 10-min. walk from Kyoto Tango Railway “Kyotango Omiya” Station
Parking	Up to 7 vehicles
Tel	0772-64-4334
Email	info@mizokawa.jp
Website	http://www.mizokawa.jp / http://www.kikoe.jp
Twitter	
Facebook	https://www.facebook.com/mizokawakyotango
Instagram	



DESIGN WEEK KYOTO

MIYASHIN

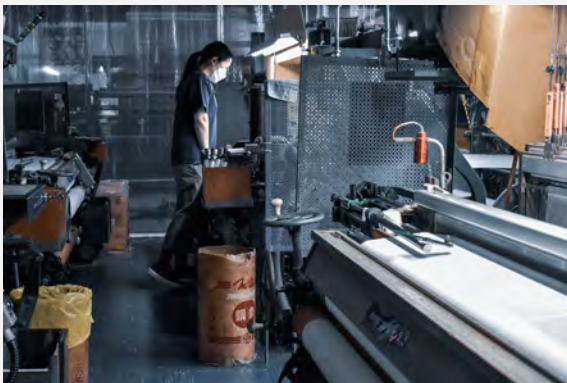
TANGO / Textiles for clothing



Specialist of High-twisted Yarn for Weaving the Future of Tango Chirimen

Miyashin, which has its roots in kimono fabric production, started its business in the Meiji period (1868-1912) and developed “polyester Chirimen” after the war. While their work is based on the techniques for making Tango Chirimen, the technique of high-twisted yarn has been further developed and a variety of weaving machines have been used. On the basis of this technology, Miyashin continues to produce textiles with unique textures that meet the world's high demand, and create fabrics with originality by incorporating new materials.

Address	1166 Iwataki, Yosano-cho, Yosa-gun, Kyoto 629-2262
Access	A 15-min. drive from Kyoto Tango Railway “Amanohashidate” Station, or a 10-min. walk from Tango Kairiku Kotsu Bus “Iwataki” Stop
Parking	Up to 2 vehicles
Tel	0772-46-2059
Email	t.miyazaki@tango-miyashin.com
Website	http://www.tango-miyashin.com
Twitter	
Facebook	
Instagram	



DESIGN WEEK KYOTO

KUKU (Fukuda Corporation)

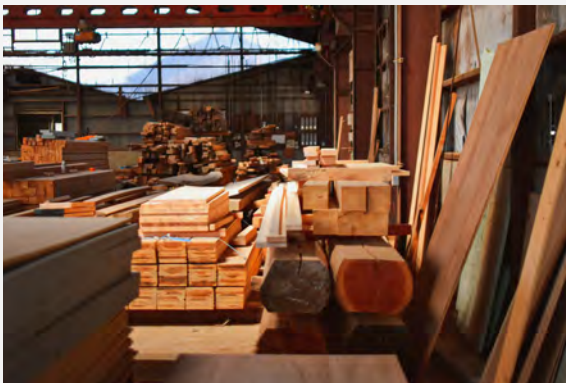
TANGO / Precious wood, wooden product processing



A Timber Exhibition Space for Experiencing the Richness of Living with Wood

Fukuda Corporation has been engaged in the construction of houses in Tango while also collecting precious woods. In 2017, the company opened “LUMBERYARD”, a timber exhibition space where visitors can experience fine timber up close. “KUKU”, the brand name, is an old name for trees. No one tree is the same in its grain, scent, color or texture. The exhibition space offers a wide range of products from woodworking sundries to single-ply top boards and DIY materials while conveying the beauty and rich character of wood and the richness of living with wood.

Address	3120 Kurobe, Yasaka-cho, Kyotango City, Kyoto 627-0142
Access	A 3-min. walk from Tango Kairiku Kotsu Bus “Kurobe” Stop
Parking	Up to 20 vehicles
Tel	0772-65-2211
Email	info@kukulife.jp
Website	https://kukulife.jp/
Twitter	
Facebook	https://www.facebook.com/kuku.fkd
Instagram	https://www.instagram.com/kuku.life/



DESIGN WEEK KYOTO

CORE MACHINERY

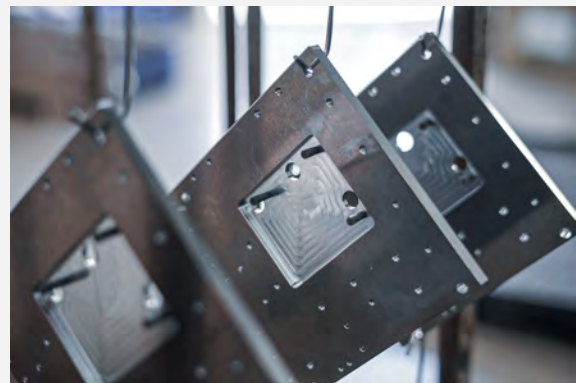
CHUTAN / Aluminum cutting and surface treatment



Aluminum Processing Professionals Living with the Rich Water of Fukuchiyama

Core Machinery is a company with unusual techniques which can perform both the cutting and surface treatment of aluminum. With technology and experience cultivated over many years, the company has supported machinery manufacturers in cutting-edge fields such as semiconductor manufacturing equipment. The surface treatment of aluminum, involves large amounts of soft water, which is an industry unique to the water-rich Fukuchiyama region. It is true that metalworking sites are closing one after another in recent times due to the aging workforce and a lack of successors. However, you will see young technicians at Core Machinery working hard while cherishing the local resources.

Address	777 Miwa-cho Ashibuchi, Fukuchiyama City, Kyoto 620-1444
Access	A 5-min. walk from Nishi Nihon JR Bus “Tanba Shinbashi” Stop
Parking	Up to 3 vehicles
Tel	0773-58-2180
Email	info@coremachinery.co.jp
Website	https://www.coremachinery.co.jp
Twitter	
Facebook	https://www.facebook.com/coremachinery/
Instagram	https://www.instagram.com/coremachinery/



DESIGN WEEK KYOTO

COBA FARM, Inc.

CHUTAN / Tomatoes, rice, tomato juice



A Couple who Revived Abandoned Farmland in just Seven Years

Mr. and Mrs. Kobayashi moved from Sakai, Osaka and started their own farm. Taking advantage of the rich natural environment and climate of Fukuchiyama, such as mountain spring water and temperature differences between day and night, they grow rice, tomatoes, Toromaru eggplant, and a variety of seasonal vegetables. The land was totally abandoned when the Kobayashi couple took it over, but they both worked hard to revitalize it into a wonderful farm in just seven years. The driving force behind their efforts was the desire to grow delicious tomatoes like the ones their grandmother produced. They deliver the vegetables grown with love directly to consumers.

Address	175 Kamioda, Fukuchiyama City, Kyoto 620-1444
Access	A 5-min. walk from JR “Kamikawaguchi” Station
Parking	Up to 5 vehicles
Tel	0773-21-5810
Email	info@cobafarm.com
Website	https://cobafarm.com
Twitter	https://twitter.com/cobafarm
Facebook	https://www.facebook.com/cobafarm/
Instagram	https://www.instagram.com/cobafarm/



DESIGN WEEK KYOTO

CHIKIRIYA

CHUTAN / Japanese confectionery



“Odori Senbei”, a Taste of Fukuchiyama, a city with a Passion for Bon Dancing

In Fukuchiyama, a city with a passion for Bon Odori dancing (a folk dance of Japan performed in August), Chikiriya developed “Odori Senbei,” a rice cracker that embodies the culture of Bon Odori dancing. Chikiriya has been loved for a long time since its establishment in 1920, attested to by the comments of the local people: “A taste of happiness that spreads throughout our heart” and “Crispy, savory, and truly delicious rice crackers.” Odori Senbei which has been awarded the Honorary President's Award by the Prime Minister, is a must-try in Fukuchiyama. Their tradition of developing new crackers and bringing smiles to the faces of Fukuchiyama people has been passed down from generation to generation.

Address	23 Okano, Fukuchiyama City, Kyoto 620-0872
Access	A 15-min. walk from JR “Kamikawaguchi” Station
Parking	Up to 5 vehicles
Tel	0773-22-3632
Email	chikiriya_odori@yahoo.co.jp
Website	https://chikiriya-kyoto.com
Twitter	
Facebook	https://www.facebook.com/chikiriya1920/
Instagram	https://www.instagram.com/chikiriya_odori_fukuchiyama/



DESIGN WEEK KYOTO

HATANO SCREW MANUFACTURING

CHUTAN / OEM factory for industrial screws



High-quality "Screws" Produced by Local Farmers

Though never in the spotlight, the world would be in trouble if screws didn't exist. Hatano Screw Manufacturing is a company that makes screws, the vital element of industry. The company's high level of technology is such that it received an award in the manufacturing category of Kyoto's Excellent Small and Medium Businesses. What is also noteworthy is the dynamic and cooperative way the company is organized. Many of the employees are in fact also working as farmers in Ayabe City. The employees actively support each other in both farming and screw manufacturing which is the key to how they sustain these two very different yet indispensable local industries.

Address	14 Higashitanaka, Takanosu-cho, Ayabe City, Kyoto 629-1263
Access	A 5-min. walk from JR "Yamaga" Station, or 1-min. walk from Aya Bus "Yamaga" Stop
Parking	Up to 3 vehicles
Tel	090-3350-5620
Email	nejihatano@gaia.eonet.ne.jp
Website	https://nejihatano.bsj.jp
Twitter	
Facebook	https://www.facebook.com/profile.php?id=100064256014880
Instagram	



DESIGN WEEK KYOTO

MAIZURU FURURU FARM

CHUTAN / Agricultural park (farm, restaurant, accommodation)



Farm Preserving the Community and Bringing Agriculture and Food Together Again

Maizuru Fururu Farm's mission is to bring agriculture and food closer together again. It was established 15 years ago with the aim of revitalizing the local community based on agriculture. Under the themes of "local production for local consumption," "sixth industrialization," and "interaction between urban and rural areas," the farm offers various facilities, including a buffet-style restaurant with about 100 dishes using as many local agricultural products as possible, a confectionary workshop, a handmade workshop where visitors can experience nature study, a farmers' market, cottages, and a farm where visitors can interact with ponies and sheep.

Address	60 Sezaki, Maizuru City, Kyoto 625-0137
Access	30 min. by Nishioura Bus from JR Higashi Maizuru Station (weekday only)
Parking	Up to 80 vehicles
Tel	0773-68-0233
Email	info@fururufarm.com
Website	https://www.fururufarm.com
Twitter	
Facebook	https://www.facebook.com/fururufarm/
Instagram	



DESIGN WEEK KYOTO

MITSUBA, Ltd.

CHUTAN / Embroidered goods



Embroidery Professionals Evolving with the Times

Mitsuba is a group of embroidery professionals who help customers express their individuality and value through embroidery in Maizuru City, located in the northernmost part of Kyoto. The company has continually developed embroidery over its 50-year history by constantly evolving and changing items to suit the times, including baby and children's clothing, men's clothing, ladies' clothing, sports gear, and general merchandise. Under the philosophy that "good items are born from good people," many of the employees are from the local area and are engaged in the manufacturing process with vigor and vitality. Savor the beauty and elegance of Mitsuba's embroidery with your own eyes.

Address	579 Fuki, Maizuru City, Kyoto
Access	1-min. walk from Kyoto Kotsu Bus “Fuki Nishi” Stop
Parking	Up to 2 vehicles
Tel	0773-75-5514
Email	info@mitsuba.biz
Website	https://www.mitsuba.biz/
Twitter	
Facebook	https://www.facebook.com/mitsubaleaf/
Instagram	https://www.instagram.com/mitsubaleaf_official/



DESIGN WEEK KYOTO